

Coaches;

I want to welcome you all to the 2019 Royal Valley Cross Country Invitational.

Please be sure to enter the park through the south entrance. If you need directions to the park please call me at your convenience.

If you are using Map Quest or GPS, you may use the following address to get a map to the Hoyt City Park; 699 Highland, Hoyt, KS 66440

Other information about the meet is on the pages that follow.

ROYAL VALLEY CROSS COUNTRY INVITATIONAL

THURSDAY SEPTEMBER 26, 2019

TO: Principals, Athletic Directors and Cross Country Coaches
FROM: David Schooler, TELEPHONE 1-785-986-6251
RE: Royal Valley Cross Country Meet on September 26, 2019

LOCATION: The meet will be held at the Hoyt City Park. Please enter the park from the south entrance. You may refer to the map enclosed.

ENTRY FEE: HS Girls- \$8 per runner or Team maximum of \$40
HS Boys- \$8 per runner or Team maximum of \$40

MS Girls- \$5 per runner or school maximum of \$40
MS Boys- \$5 per runner or school maximum of \$40

SCORING: Scoring will be done using bar codes and scanners. Each coach will determine his or her team's score as a backup.

SCHEDULE: 4:00 7th Middle School Boys & Girls (2 mile)
4:30 8th Middle School Boys & Girls (2-mile)
5:00 JV Boys
5:45 Varsity/JV Girls
6:30 Varsity Boys

We may run ahead of schedule if possible depending on entries in the races.

You may enter as many Junior Varsity boys and girls as you want.

SCHOOLS: The following schools have been invited to attend:
Holton HS/MS, Jackson Heights HS/MS, Jeff West HS/MS, Kickapoo Nation School, McLouth HS/MS, Perry-Lecompton HS, Rossville Sr./Jr. HS, Santa Fe Trail HS/MS, St. Marys HS/MS, Atchison MS, Seaman MS, Cornerstone HS/MS, and Silver Lake Jr./Sr. HS, St. Marys Academy, Wamego HS (JV).

ENTRIES: Please submit entries via Athletic.net using the following instructions by 9:00 am Sep. 23rd.

AWARDS: Boys Varsity 20 Medals
Girls' Varsity 20 Medals
Boys JV 10 Medals
Girls JV 10 Medals
MS Girls 7th 10 Medals
MS Boys 7th 10 Medals
MS Girls 8th 10 Medals
MS Boys 8th 10 Medals
Boys and Girls trophies will be awarded to the top two Varsity teams.

ROYAL VALLEY CROSS COUNTRY INVITATIONAL THURSDAY SEPTEMBER 26, 2019

Please submit entries by Monday –September 23, 2019 by 9:00am.
You may modify your entry at the meet if needed.

School: _____

NUMBER OF HIGH SCHOOL RUNNERS: (\$8 per Individual or \$40 per team)

Girls - \$8.00 per runner or Team max \$40.00 \$40.00 _____

Boys - \$8.00 per runner or Team max \$40.00 \$40.00 _____

Total- \$80.00 _____

NUMBER OF MIDDLE SCHOOL RUNNERS: (\$5 per Individual or school max of \$80.00)

Girls - \$5.00 per runner \$ _____

Boys - \$5.00 per runner \$ _____

Total- \$ _____

Please send your entire **ROSTER** with this entry, so that we are able to make your name tags prior to the meet! We will be using bar codes and scanners for the scoring with hand scoring as backup.

Please mail your check to RVHS ASAP.

We are looking forward to an excellent meet. If you have any questions, please call David Schooler at 785-986-6251 or email to schoolerd@rv337.org

Coaches email Address: _____

ROYAL VALLEY CROSS COUNTRY INVITATIONAL THURSDAY SEPTEMBER 26, 2019

Since Royal Valley will be using bar codes and scanners this year, we will need runners assigned to a race. You will be allowed to make last minute changes on meet day.

Royal Valley MS Cross Country Invitational Online Entry Instructions (#163923)

Date 9/26/2019 **Host** Royal Valley
Location Hoyt City Park **Director** David Schooler
8th & Highland Avenue, Hoyt 66440 **Email** schoolerd@rv337.org
First Race **Phone** 7859866251

This meet is using free online registration at Athletic.net!

Athletic.net is a resource for Track & Field and Cross Country coaches, offering free **statistic tracking**, easy **meet registrations**, free **meet managers**, and free tools to simplify common coaching tasks.

Follow the 4 steps below to get started:

1. Sign up for a free coach account (if you do not have one)

- Go to the website: www.athletic.net
- Click on 'Log In' in the upper right hand corner, and then click '**Sign Up**' on the bottom of that screen.
- Complete the signup wizard
- After receiving the confirmation email, go on to #2

2. Add meets to your season calendar

- **Log In** to Athletic.net
- Navigate to the Events page
- Start typing **Royal Valley MS Cross Country Invitational** into the Search Box
- Expand the meet card, and find the button to add this meet to your teams calendar
- Repeat this process for the rest of your season calendar (*You can also find meets by date and location*)
- If a meet is not listed, you can add it to your calendar by clicking 'Add new Event' and following the wizard
- Verify that your calendar is correct. Click on a Meet, then the pencil icon to make corrections to a meet, or use the trash can icon to delete a meet.

3. Enter team roster

- Navigate to your team page by opening the side menu, then click on your team.
- Click on Manage Team
- Click on Edit Roster under Athletes
- Add athletes to the roster manually, or upload your roster using the "Upload Athlete Roster" option.

4. Register athletes for Royal Valley MS Cross Country Invitational

- Locate **Royal Valley MS Cross Country Invitational** on your team's main Cross Country page and click on it
- Click "**Register Athletes**"
- Follow instructions on the meet registration page to enter your athletes into the appropriate division(s).

Our sites use cookies and similar technologies. By using our sites, you are agreeing to our revised Privacy Policy and Terms of Service, including our Cookie Policy.

I Agree

Royal Valley Cross Country Invitational Online Entry Instructions

(#162784) *High School*

Date 9/26/2019
Location Hoyt City Park
8th & Highland Avenue, Hoyt 66440
First Race

Host Royal Valley
Director David Schooler
Email schoolerd@rv337.org
Phone 7859866251

This meet is using free online registration at Athletic.net!

Athletic.net is a resource for Track & Field and Cross Country coaches, offering free **statistic tracking**, easy **meet registrations**, free **meet managers**, and free tools to simplify common coaching tasks.

Follow the 4 steps below to get started:

1. Sign up for a free coach account (if you do not have one)

- Go to the website: www.athletic.net
- Click on 'Log In' in the upper right hand corner, and then click '**Sign Up**' on the bottom of that screen.
- Complete the signup wizard
- After receiving the confirmation email, go on to #2

2. Add meets to your season calendar

- **Log In** to Athletic.net
- Navigate to the Events page
- Start typing **Royal Valley Cross Country Invitational** into the Search Box
- Expand the meet card, and find the button to add this meet to your teams calendar
- Repeat this process for the rest of your season calendar (*You can also find meets by date and location*)
- If a meet is not listed, you can add it to your calendar by clicking 'Add new Event' and following the wizard
- Verify that your calendar is correct. Click on a Meet, then the pencil icon to make corrections to a meet, or use the trash can icon to delete a meet.

3. Enter team roster

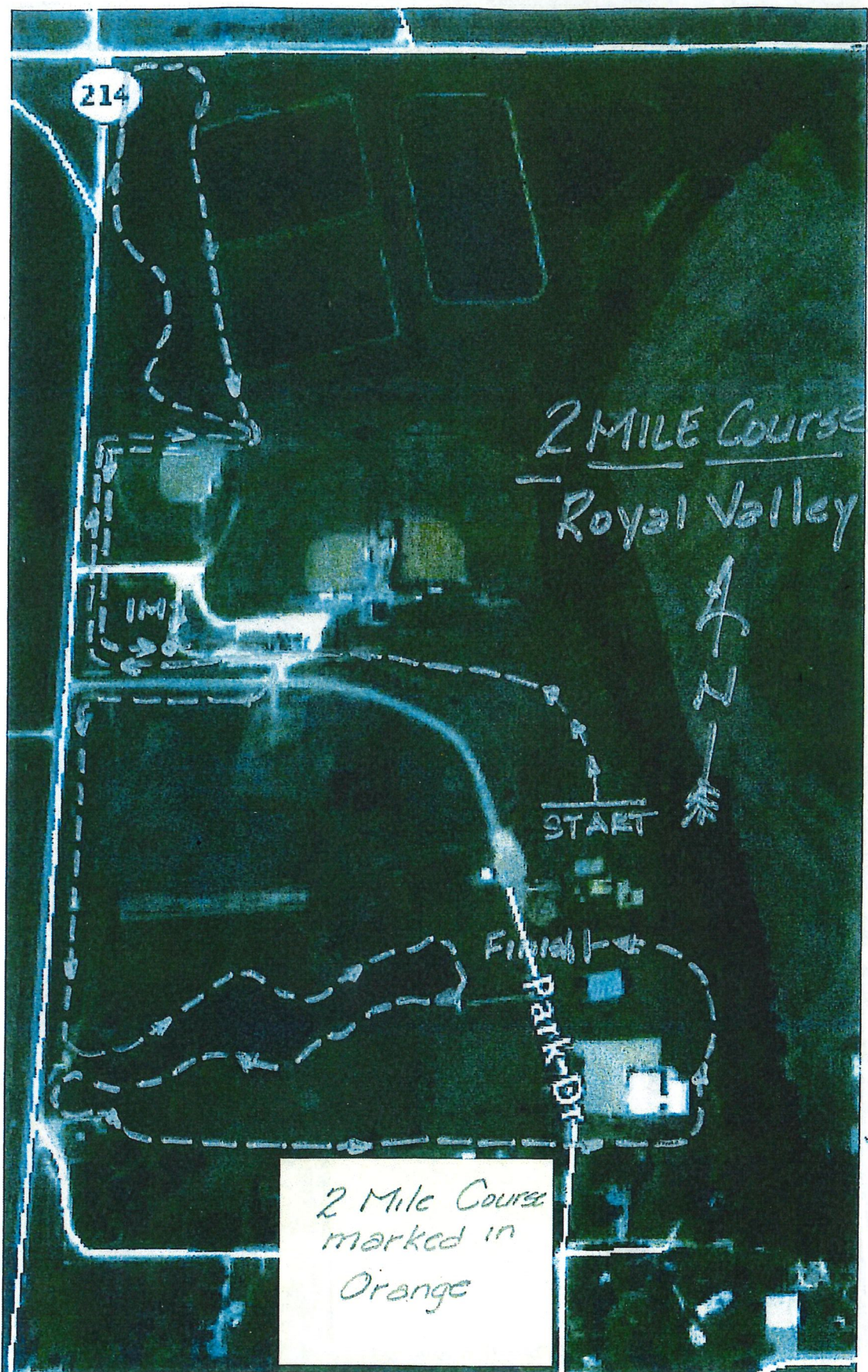
- Navigate to your team page by opening the side menu, then click on your team.
- Click on Manage Team
- Click on Edit Roster under Athletes
- Add athletes to the roster manually, or upload your roster using the "Upload Athlete Roster" option.

4. Register athletes for Royal Valley Cross Country Invitational

- Locate **Royal Valley Cross Country Invitational** on your team's main Cross Country page and click on it
- Click "**Register Athletes**"
- Follow instructions on the meet registration page to enter your athletes into the appropriate division(s).
- Use the "Add an athlete" buttons to add athletes to your roster if needed.

Our sites use cookies and similar technologies. By using our sites, you are agreeing to our revised Privacy Policy and Terms of Service, including our Cookie Policy.

I Agree



214

2 MILE Course
Royal Valley

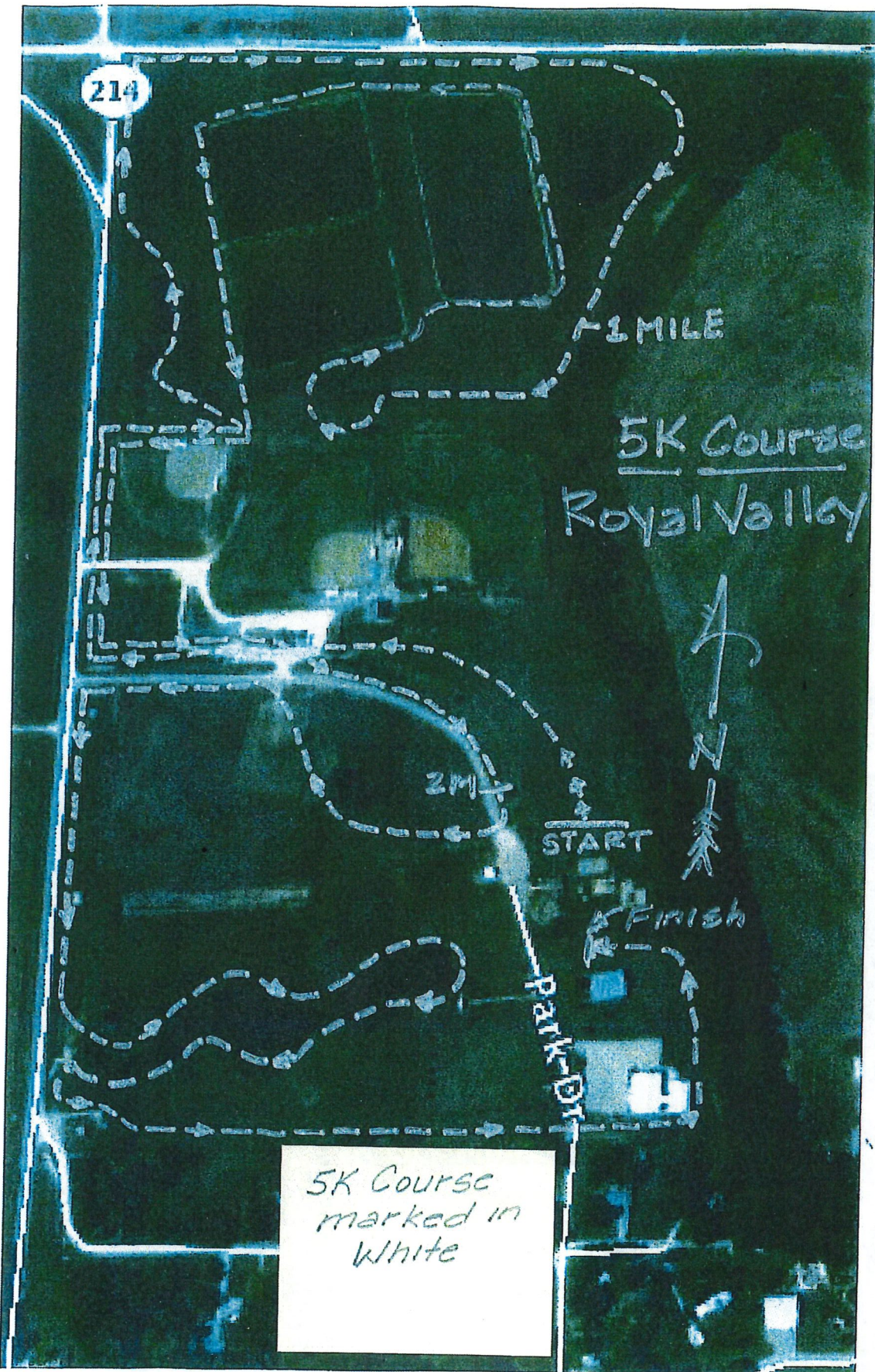


START

Finish

PARK DR

2 Mile Course
marked in
Orange



214

1 MILE

5K Course
Royal Valley

2M

START

FINISH

PARK DR

5K Course
marked in
White